

13TH FLOOR  
**MEDICAL CONDO**  
FOR LEASE

PRICE	\$105 PSF
APPROX SIZE	857 SQ FT
TERM	NEGOTIABLE
POSSESSION	ARRANGED



**30 CENTRAL PARK SOUTH, 13A**  
CENTRAL PARK SOUTH, MANHATTAN, NY 10019



## LOCATION

- BETWEEN 6TH AVE AND GRAND ARMY PLAZA
- ACROSS THE STREET FROM CENTRAL PARK

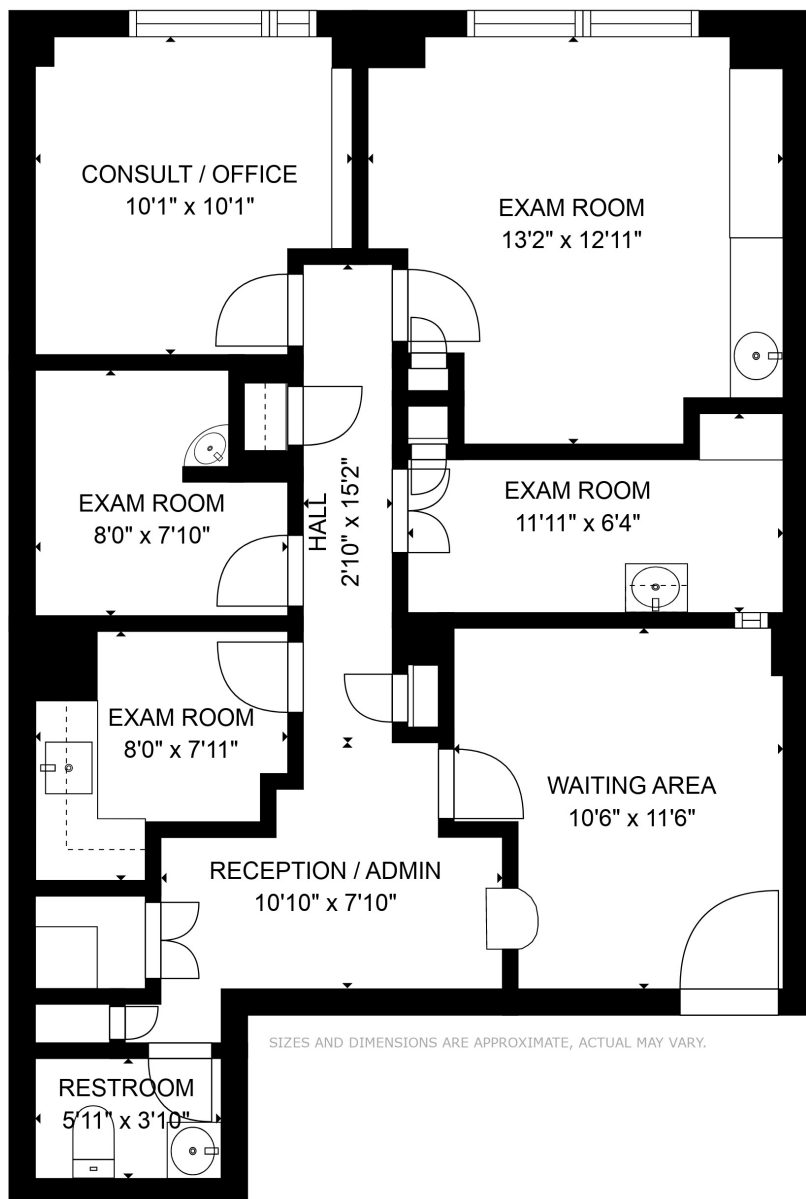
## LAYOUT

- WAITING ROOM
- RECEPTION AND ADMINISTRATION AREA
- FOUR EXAM ROOMS
- ONE CONSULT/OFFICE
- UTILITY ROOM
- ONE RESTROOM
- FOUR STORAGE CLOSETS

## ADDITIONAL FEATURES

- WINDOWS FACING CENTRAL PARK
- ADAPTABLE TO ANY MEDICAL SPECIALTY





**Paul L Wexler**

LICENSED ASSOCIATE  
REAL ESTATE BROKER

P: 212.836.1075  
E: PLW@corcoran.com

**Josef Yadgarov**

LICENSED ASSOCIATE  
REAL ESTATE BROKER

P: 212.836.1097  
E: josef.yadgarov@corcoran.com

**Alisia Ramlochan**

LICENSED ASSOCIATE  
REAL ESTATE BROKER

P: 212.893.1450  
E: alisia.ramlochan@corcoran.com

**Elliot Dennis**

LICENSED REAL ESTATE  
SALESPERSON

P: 212.893.1746  
E: elliot.dennis@corcoran.com

**Cosmin Bitu**

LICENSED ASSOCIATE  
REAL ESTATE BROKER

P: 917.602.5754  
E: cosmin.bitu@corcoran.com

**Kurt Herold**

LICENSED ASSOCIATE  
REAL ESTATE BROKER

P: 212.323.3817  
E: kherold@corcoran.com

**Kathleen Caracappa**

LICENSED REAL ESTATE  
SALESPERSON

P: 212.893.1441  
E: kathleen.caracappa@corcoran.com

FOR MORE INFO



Real estate agents affiliated with The Corcoran Group are independent contractors and are not employees of The Corcoran Group. Equal Housing Opportunity. The Corcoran Group is a licensed real estate broker located at 590 Madison Ave, NY, NY 10022. All information furnished regarding property for sale or rent or regarding financing is from sources deemed reliable, but Corcoran makes no warranty or representation as to the accuracy thereof. All property information is presented subject to errors, omissions, price changes, changed property conditions, and withdrawal of the property from the market, without notice.